

Transparent Sight Glass Level Gauge PN 100 Type 700.C7

Applications

The transparent sight glass level gauge type 700.C7 is for direct reading e.g. for steam boilers.

Special Features

- Red - green
- Connection back-side
- Gauge heads backside
- Glass holder with smooth sight glasses
- Lever

General Data

Sight length SL*)	< ME
Actuation	lever
Connection gauge head-body	valves backside
Valve type	760.68
Valve passage	8 mm
Process connection	flange DIN, EN or ANSI
Materials	CS
Material sight glasses DIN 7081	Borosilikate
Material gaskets	Graphite
Other materials on request.	

Design Data

Design temperature / Design pressure (for glass sizes 2 to 9)	-10...120°C / 70 bar
	-10...200°C / 65 bar
	-10...243°C / 55 bar
	-10...300°C* / 45 bar

*) with mica protection inner side

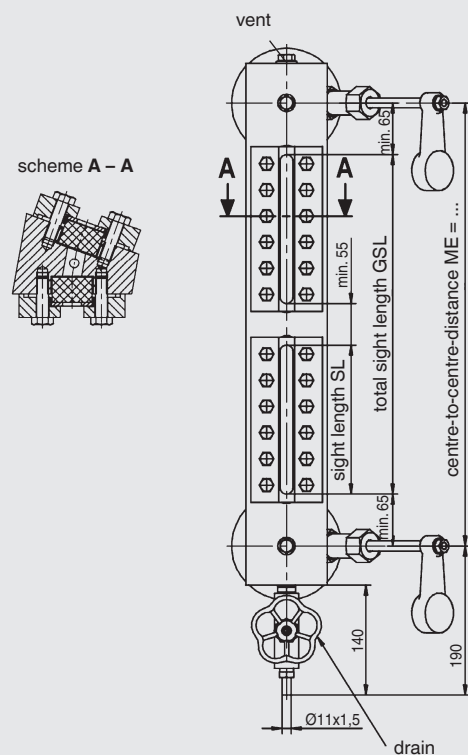
Accessories

Pointer	NW-mark acc. to TRD
For shut off valves	automatically closing ball (safety device) (at least 1 bar pressure tanks required for the function)
Glass protection	Mica exterior protection
Illumination device series	see 709

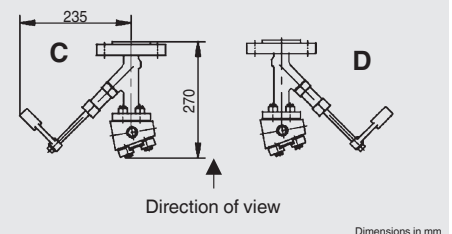
Glass size / range of centre-to-centre distance

Glass size*	5	6	7	8	9
Glass length / mm	220	250	280	320	340
SL per segment	200	230	260	300	320
min. center-to-center-distance / mm					
1 x glass size	330	360	390	430	450
2 x glass size	585	645	705	785	825
3 x glass size	840	930	1020	1140	1200
4 x glass size	1095	1215	1335	1495	1575
5 x glass size	1350	1500	1650	1850	1950

Type 700.C7



Arrangement



Sight length SL = min. center-center-distance ME - 130 mm
Interruption between 2 sight glasses: min. 55mm

CS (= carbonsteel) and SS (= stainless steel type 316SS) are materials suitable for Pressure Vessels according to EN or ASME.