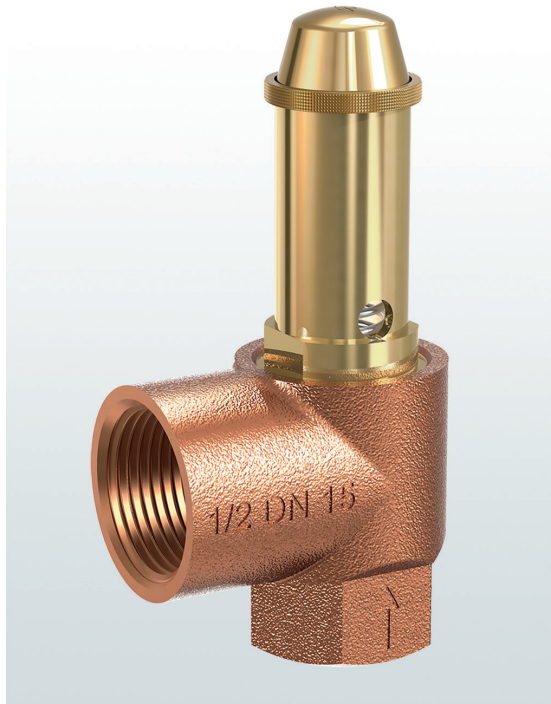


# → Series 651mWNK

**651mWNK**

Safety valves made of gunmetal, angle-type with threaded connections



## ■ SUITABLE FOR

Potable water cold	up to 40°C	
Potable water hot	up to 95°C	

## ■ EXAMPLES OF USE

For the protection of:

- closed circuit water heaters for drinking water and process water according to TRD 721, DIN 4753 and DIN 1988 for temperatures up to max. 95°C.

The safety valve is installed in the cold water inlet of the hot water heater according to DIN 1988.

- water heaters for potable and process water and -storage tanks

**Safety valves are set and sealed at the factory.**

## ■ APPROVALS

TÜV Type test approval 532	W
EU type examination	W
TSG ZF001-2006	W
TR ZU 032/2013 - TR ZU 010/2011	W

### Type approval ACS

#### Requirements

TRD 721	UK PESR 2016 No. 1105
DIN 4753	
DIN 1988	
PED 2014/68/EU	

#### Classification society

American Bureau of Shipping	ABS
DNV	DNV
Russian Maritime Register of Shipping	RS
Lloyd's Register EMEA	LR EMEA



## ■ MATERIAL



## ■ SPECIFICATION



1/2" – 1 1/4"



– 10°C to + 95°C



3,0 – 10 bar

## ■ MATERIALS

Component	Material	DIN EN	ASME
Inlet body	Gunmetal	CC499K	CC499K
Outlet body	Gunmetal	CC499K	CC499K
Internal parts	Brass	CW617N	CW617N
Spring	Spring steel with anti-rust protection	1.1200	ASTM A228

Series 651mWNK ■ VALVE VERSION

<b>m</b>	Standard with diaphragm	The diaphragm prevents the medium entering into the spring housing and protects moving parts from being affected by the medium.
----------	-------------------------	---

■ MEDIUM

<b>WN</b>	Warm water (national for Germany)	Water heaters with temperatures $\leq 95^{\circ}\text{C}$
-----------	-----------------------------------	---

■ TYPE OF LIFTING MECHANISM

<b>K</b>	Standard with twist-type lifting mechanism
----------	--

■ AVAILABLE NOMINAL DIAMETERS AND CONNECTION SIZES

Nominal diameter DN	15	20	25	32
<b>Inlet</b>	1/2" (15)	3/4" (20)	1" (25)	1 1/4" (32)
<b>Outlet</b>	1/2" (15)			
	3/4" (20)	■		
	1" (25)		■	
	1 1/4" (32)			■
	1 1/2" (40)			

■ TYPE OF CONNECTION INLET / OUTLET THREADED CONNECTIONS

<b>f / f</b>	Standard	Female thread BSP-P / Female thread BSP-P	DIN EN 10226, ISO 7-1 / DIN EN 10226, ISO 7-1
--------------	----------	---	---

■ SEALS

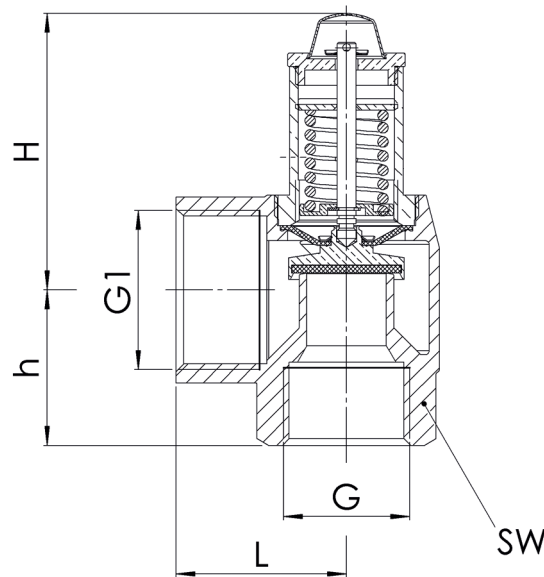
<b>EPDM</b>	Ethylene propylene diene	Elastomere flat seal and diaphragm (up to 100% glycol resistant)	-10°C to +95°C
-------------	--------------------------	--	----------------

## NOMINAL DIAMETERS, CONNECTIONS, INSTALLATION DIMENSIONS

Series 651mWnk: Connection, installation dimensions, ranges of adjustment					
Nominal diameter	DN	15	20	25	32
Connection DIN EN 10226-1	G	1/2" (15)	3/4" (20)	1" (25)	1 1/4" (32)
Outlet DIN EN 10226-1	G1	3/4" (20)	1" (25)	1 1/4" (32)	1 1/2" (40)
Installation dimensions in mm	L	34	40	45	55
	H	70	65	75	85
	h	28	34	41	47
	SW	27	32	41	50
Weight	kg	0,3	0,45	0,75	1,1
Set pressure <sup>1</sup>	bar	6; 8; 10	6; 8; 10	6; 8; 10	6; 8; 10

<sup>1</sup>Other set pressures available on request against surcharge

## MAIN DIMENSIONS, INSTALLATION DIMENSIONS



## INDIVIDUAL SELECTION / VALVE CONFIGURATION

Series	Valve version	Medium	Lifting device	Nominal diameter DN	Connection type		Connectiongröße		Seal	Options	Set pressure	Quantity
					Inlet	Outlet	Inlet	Outlet				
651	m	WN	K	25	f	f	25	32	EPDM		6,0	10
651	m	WN	K		f	f			EPDM			
651	m	WN	K		f	f			EPDM			
651	m	WN	K		f	f			EPDM			

## ENQUIRY

Copy and send to: [order@goetze-armaturen.de](mailto:order@goetze-armaturen.de).

Series 651mWNK: Blowing-off rates at 10% above set pressure					
Nominal diameter DN		15	20	25	32
Set pressure bar		6; 8; 10	6; 8; 10	6; 8; 10	6; 8; 10
Warm water	Contents of the service water tank in l	200	200 1.000	1.000 5.000	5.000
	over to				
	Max. permissible heating output in kW	75	150	250	
Above 5000 l the heat output determines the parameters					26.000
	Heating output in kW				