

www.phoenix-mt.com  
PHÖNIX Messtechnik GmbH

# PHÖNIX

## Sight glass level gauge CL150 to 600

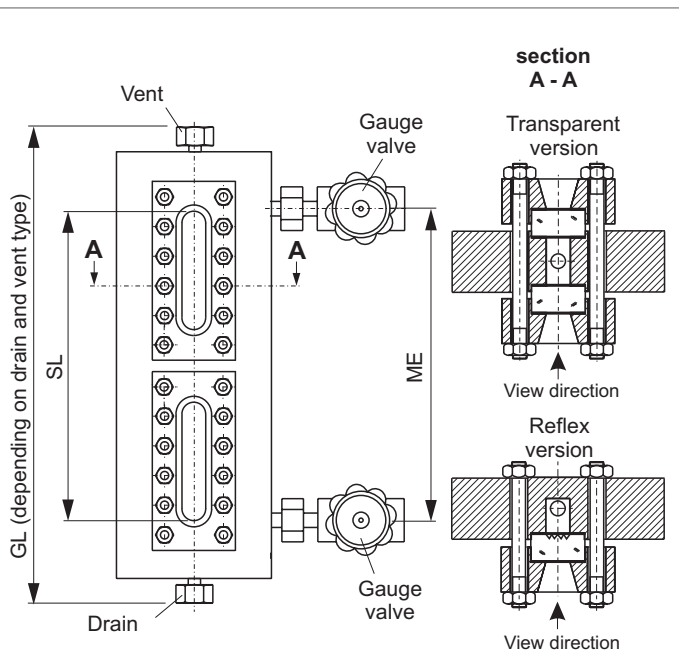
Heavy duty execution  
Reflex, Transparent  
Connection side-side fixed  
Connection gauge valve to gauge chamber: union  
Handwheel

Product group **700**

Type **37**

Sheet: 27      Revision: 0

Date: 02/05



### Field of Application

Direct reading liquid level indicator for general applications up to CL900 (depends on glass type). Increased safety with ball check valves.

### General Data

Visible length SL: ≤ME  
Body: 75x30, 80x40, 100x40, 120x40, 140x40  
Connection gauge valve - body: union  
Gauge valve types: see data sheet 760.50/51/52  
Actuation: hand wheel  
Material glass plates acc. to DIN 7081: Borosilicate  
Material media wetted parts: CS, SS  
Depending on delivery situation material can vary.  
Types with special materials e. g. Hastelloy, Monel etc. are available.  
Weight  
- basic weight (glass type 4-11)  
  reflex / transparent: 21.0-27.0/24.0-32.0 kg  
- per segment (glass type 4-11)  
  reflex / transparent: 7.9-15.6/10.4-19.8 kg  
Depending on execution weight can vary.

### Design Data

Design pressure/-temperature see derating  
75x30, 80x40, 100x40,  
120x40, 140x40: Datenblatt BG00R2-00RD

### Further Data

Connection gauge valve - body: see 700.VAR  
Process connection: see 700.VAR  
Vent: see 700.VAR  
Drain: see 700.VAR

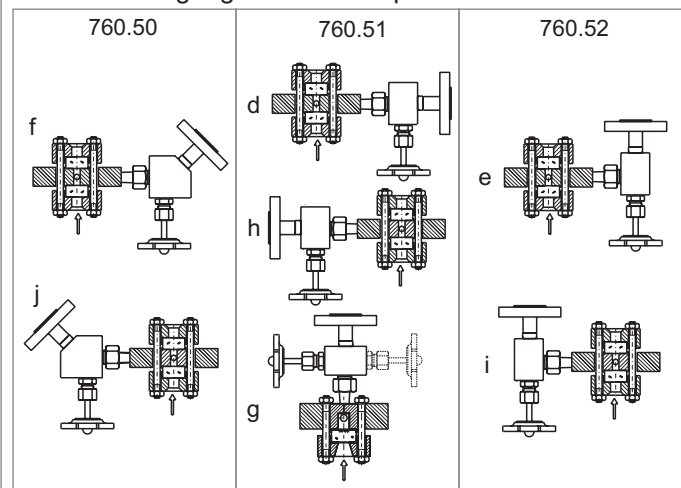
### Accessories

Glass protection etc.: see accessories  
Frosts protection: see accessories  
Illumination: see accessories  
Scale: see accessories  
Heating: see accessories

CS (= carbon steel) and SS (= stainless steel type 316SS) are materials suitable for Pressure Vessels according to EN or ASME.

Subject to alterations

### Orientation of gauge valve and operation



### Ordering no.

7 0 0 3 7 X X X X X X X X - X X - X X X X X X X X X X - X X X X X			see 700.VAR	ME [mm]	
bridging	without	0	X X nos of segments	results from ME	glass type
	with	1		X spec. glass types	
glass window	Reflex (DIN 7081)	1	DIN-bolts, -nuts	DIN/ASME	
	Transparent (DIN 7081)	2	A ANSI-bolts, -nuts		
gauge valve	760.50	5 0	X 17, A - D, depends on design pressure	gauge body	
	760.51	5 1	X see data sheet 760.50/51/52	orientation	
	760.52	5 2		gauge valve	

### PHÖNIX

Messtechnik GmbH  
Salzschlierer Straße 13  
D-60386 Frankfurt/M.  
Tel. +49/69/41 67 42 - 20  
Fax +49/69/41 67 42 - 29  
sales@phoenix-mt.com  
www.phoenix-mt.com

# PHÖNIX